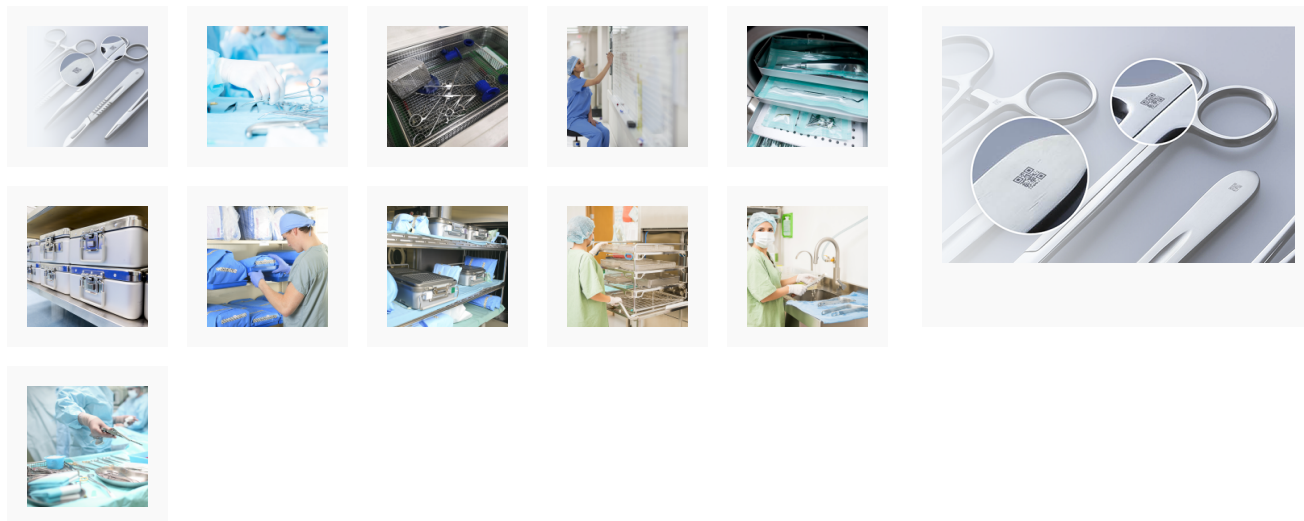




Censis CensiTrac®

CensiTrac Instrument and Tray Tracking & Management System by Censis



Features

- CensiTrac is a comprehensive asset management solution.
- CensiTrac provides transparency to all CSD & Theatre stakeholders on instrument reprocessing and workflow.
- CensiTrac helps to drive faster turnaround times to meet busy theatre schedules.
- CensiTrac offers easy access to department records and data through analytical software and helps to support evolving regulatory requirements.
- CensiTrac efficiently manages the increasing number of complex staff competencies and supports reprocessing of larger and more complicated equipment & trays.
- CensiTrac easily integrates with other digital tools like oneSource and Belimed SmartHub, to provide your CSD with a well supported workflow.
- CensiTrac supports the whole process throughout the CSD; **DECONTAMINATION** - prioritises instrument set reprocessing via a seamless theatre scheduler interface, **TRAY ASSEMBLY** - improves accuracy and efficiency by giving users immediate on-screen access to important details, **STERILISATION** - provides seamless electronic data capture, encouraging a paperless environment that maintains compliant records, **CASE CART ASSEMBLY** - eliminates time wasted searching for assets through unique inventory management capabilities and **OPERATING ROOM** - enhances theatre efficiency, start times and theatre staff visibility to case/tray status.

Product Code	Product Description	Pack Size	Quote
CEN-INSTRAC	Censis Instrument Tracking	ea	
CEN-TRAYT	Censis Tray Tracking	ea	

Relevant Product

- [Smeg WD2145](#)

- [Smeg WD1160](#)
- [Smeg WD4060](#)
- [Smeg WD4190](#)
- [UW565 Ultrasonic Cleaner](#)
- [Bandelin Sonorex](#)
- [Bandelin Sonomic](#)
- [Bandelin Triston](#)
- [Bandelin Sonoboard](#)

Applications

- Dental
- CSD
- Healthcare Facilities
- Endoscopy

Resources

- Video
- Brochure